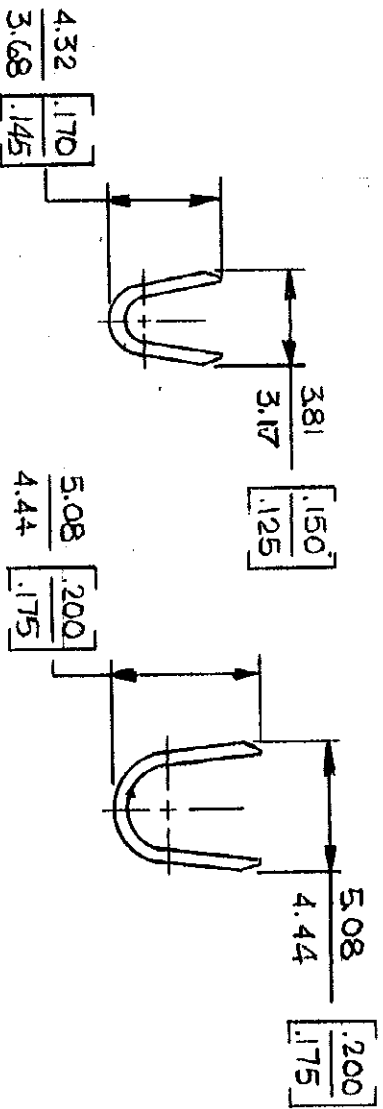
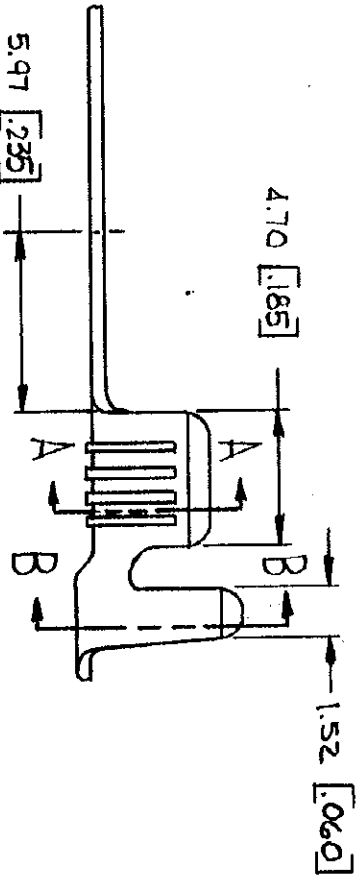
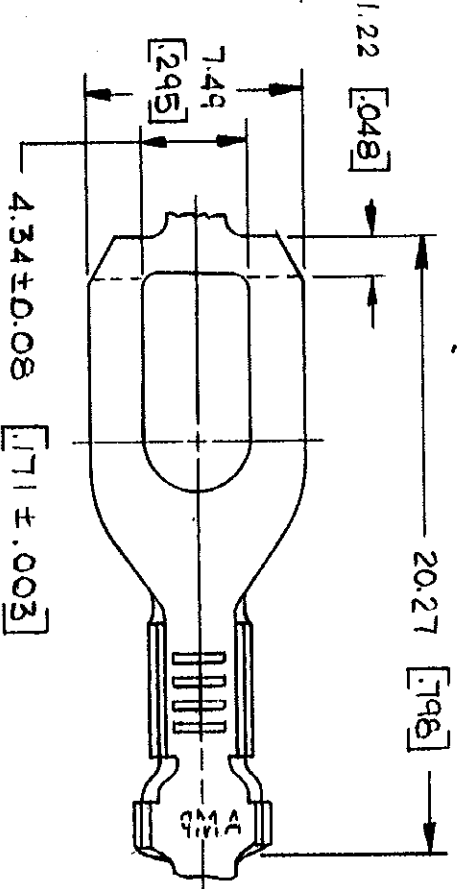


© COPYRIGHT 1964 BY AMP INCORPORATED, HARRISBURG, PA.  
 ALL INTERNATIONAL RIGHTS RESERVED. AMP INCORPORATED PRODUCTS  
 COVERED BY U. S. AND FOREIGN PATENTS AND/OR PATENTS PENDING.

FLANGED IN  
 APPLICATOR

| REVISIONS |   |      | 1   | Loc                        | DIST    |          |
|-----------|---|------|-----|----------------------------|---------|----------|
| P         | F | ZONE | LTR | DESCRIPTION                | DATE    | APPROVED |
|           |   |      | D   | REDRAWN & REVISED A-3943   | 6-26-78 | DTA SS   |
|           |   |      | E   | ADDED - 3 TTI              | 9-5-79  | PLT RGF  |
|           |   |      | F   | OBSOLETED - 3 PER A-5398   | 4-15-82 | RSJ GY   |
|           |   |      | G   | INSUL SUPPL LENGTH AF-0781 | 2-20-85 | RSJ GY   |
|           |   |      | H   | REVISED AE1994             | 7/1/86  | SS/RSJ   |



SECT A-A

SECT B-B

|  |                                       |                           |        |                                  |         |
|--|---------------------------------------|---------------------------|--------|----------------------------------|---------|
| UNLESS OTHERWISE SPECIFIED DIMENSIONS ARE IN DECIMALS ± 0.38 [0.15] ANGLES ± 1° 0' |                                       | CONTRACT NO.              |        | NAME                             |         |
| STUD SIZE  | WIRE RANGE                            | INSULATION RANGE          | FINISH | MATERIAL                         | PART NO |
| M 4 # 8  | 0.8 - 2.0 mm <sup>2</sup> [.18 - .14] | 2.54 - 3.56 [.100 - .140] | TIN    | 0.46 BRASS                       | 60774-1 |
| MATERIAL   | SEE TABLE                             |                           | NONE   | BRASS                            | 60774-2 |
| FINISH   | SEE TABLE                             |                           |        |                                  | 60774-3 |
| DR D. Dalby 6-26-78  |                                       | CHK R. Koffler 7-25-78    |        | AMP INCORPORATED Harrisburg, Pa. |         |
| APPR R. D. Hoff 8-8-78   |                                       | APPR S. J. L. 8-10-78     |        | SPADE                            |         |
| DESIGN APPD  |                                       | OTHER APPD                |        | SIZE CODE IDENT NO DRAWING NO    |         |
|  |                                       |                           |        | B 00779 60774                    |         |
|  |                                       |                           |        | SCALE SHEET                      |         |

**METRIC**

1. CONTINUOUS STRIP ON REELS.
  2. DIMENSIONS IN BRACKETS ARE IN INCHES.
- △ SUFFIX LETTER MUST BE USED ONLY WHEN ORDERING APPLICATOR TOOLING.